

SMART SOLUTIONS FOR THE LABELING INDUSTRY

VIRGO - DESKTOP DIGITAL LABEL FINISHING SYSTEM



Virgo is a compact desktop finishing system that unwinds, laminates labels for durability, digitally die cuts, removes excess label material around each die-cut shape, slit, and rewinds offering you everything to professionally cut and finish labels.

The system provides a very accurate label finishing solution using cutting plotter technology with reduced dimensions. This allows you to cut different types of materials and shapes on the fly without the added cost of dies.

The unit is also equipped with a cutter management tool that works in tandem with a camera forming an integrated optical black-mark registration system providing cutting speed optimization and avoiding synchronization issues.

The Virgo's core features offer the user full flexibility, limitless variations in label design with a smooth workflow. The Virgo digital label finisher is truly the perfect on-demand short run label finishing solution for those using a digital color label printers and presses.

SOME BENEFITS OF USING VIRGO:

- » Short run in-house label production reducing cost and inventory requirements
- » Producing full bleed labels will no longer be a nightmare
- » Laminating option for labels for added durability (no need for special media)
- » No need to order pre-die cut label rolls
- » Desktop size unit
- » No need to set up a minimum gap between labels when printing in full bleed (Saves media).

A WORLD OF SOLUTIONS

AGENCY CERTIFICATIONS



SMART SOLUTIONS FOR THE LABELING INDUSTRY

WASTE PRESSING ROLL

This pressing roller positioned above the waste core holder facilitates the matrix removal from the die-cut roll, reducing the risk of tearing and ensuring more precise operation of the machine.



EASY TO MOVE

Virgo series are equipped with two handles, one on each side, that allows you to easily move the machine.



SPECIFICATIONS

| Part number | VRG14PL | VRG22PL |
|-----------------------------------|---|-----------------|
| Input / Output max. roll diameter | 200 mm (7.87") | 200 mm (7.87") |
| Minimum media width | 100 mm (3.94") | 100 mm (3.94") |
| Maximum media width | 140 mm (5.51") | 225 mm (8.86") |
| Maximum cutting width | 122 mm (4.80") | 200 mm (7.87") |
| Minimum / Maximum label length | 10 mm (0.39") / 350 mm* (13.77") *with limitations | |
| Minimum slitting width | 19 mm (0.75") | |
| Number of slitting blades | up to 6 | up to 8 |
| Lamination module | YES | |
| Dimensions | L = 116 cm (45.66") H = 68 cm (26.77") W = 68 cm (26.77") | |
| Weight (estimated) | 180 kg (396 lb) | 200 kg (440 lb) |
| Roll core size | 76 mm (3") | |
| Maximum media thickness | 0.25 mm (10 mil) | |
| Maximum cut speed | 600 mm/s (24 in/s) in all directions | |
| Warranty | One year parts and labor. Usage limitation may apply | |

UNWINDING

LAMINATION

KNIFE
CUTTING

WASTE
MATRIX
REMOVAL

SLITTING

REWINDING
TO FINISHED
ROLLS

A WORLD OF SOLUTIONS

AGENCY CERTIFICATIONS



SMART SOLUTIONS FOR THE LABELING INDUSTRY

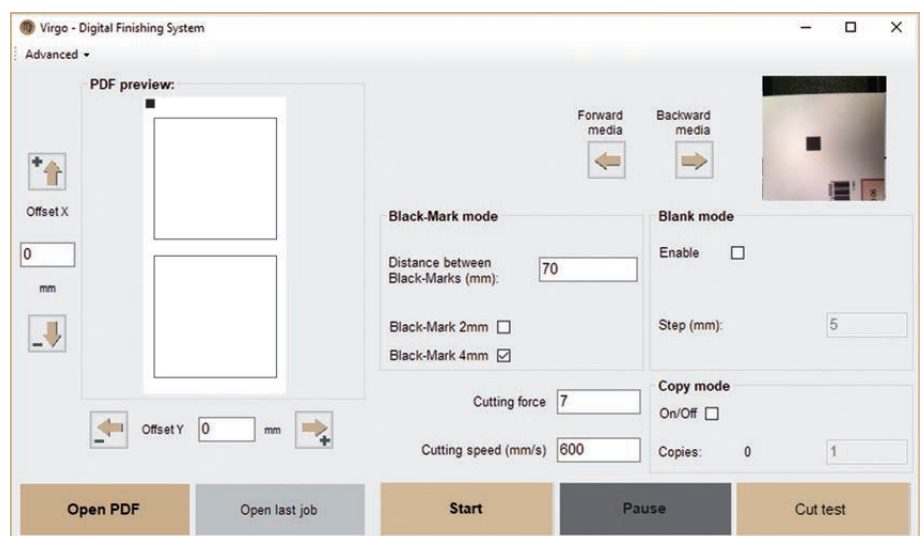
PLOTTER SPECIFICATIONS

| | |
|----------------------------|---|
| Data interface | USB 2.0 |
| Linear cut speed | Dependent on graphic |
| Programmable Cutting Force | 20 gf - 300 gf in 31 steps (Max 300 gf) |
| Cut precision | 0.3 mm (0.012") |
| Test cut function | Yes |
| Cut to registration | Single point registration black-mark (4 mm (0.16") or 2 mm (0.08") square) |
| Cut ability | Both printed and unprinted media |
| Interface & Software | Virgo Software (PC only (Windows x32 and X64) Win 7, Win 8.x, Win 10) cutter management tool. |
| Power requirements | 100-240 VAC, 240 watts |

VIRGO CUTTING MANAGER

Virgo software works together with a camera forming an integrated optical black-mark registration system.

With this software, the operator can import the cutting files created on Adobe Illustrator or Corel Draw which is also used to create the black marker.



The Virgo is equipped with a camera used to detect the black-mark printed on the media. This camera assist the software in detecting the black-mark created inside the cutting file.

This process tells the plotter when and where to start cutting the media.

A WORLD OF SOLUTIONS

AGENCY CERTIFICATIONS



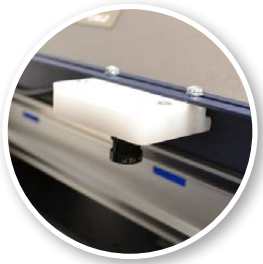
SMART SOLUTIONS FOR THE LABELING INDUSTRY



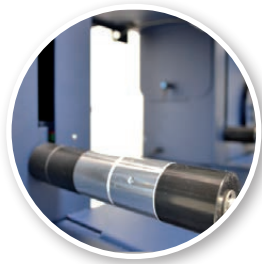
Laminating sensor



Knife cutting



Camera



Ultrasonic tension arm



Friction



Adjustable guides



Sponge pressing roll



Matrix remover



Cutting



Remove unwanted waste from the edge of the roll

WHAT VIRGO HAS AND THE COMPETITION DOESN'T...

| | |
|-------------------|---|
| Optical Sensing | With the help of the camera, the Virgo uses an integrated optical black-mark registration system allowing it to read one black-mark for each cutting layout, optimizing cutting speed with no synchronization issues. |
| Size Does Matter | Virgo compact size help operators have more room to easily and quickly load the media and get the machine ready to work in a few minutes. |
| Media Track | Virgo is equipped with an ultrasonic sensor system that generates a loop of media both in plotter input and output in order to guarantee a smooth media track during the cutting operations. |
| Slitter Blades | Virgo is equipped with inexpensive multi edge blades helping to extend the life of the blade. |
| Blank Labels | Cutting blank labels on the Virgo is hassle free. With the help of the Virgo software, operators will only need to set label step, meaning there's no need to load media with a pre-printed black-marker. |
| Software | Virgo proprietary software can be installed on any Windows based computer running XP or later. |
| Remote Assistance | Customers whose computers are connected to internet can be reached by one of our operators for remote assistance and firmware upgrades. |